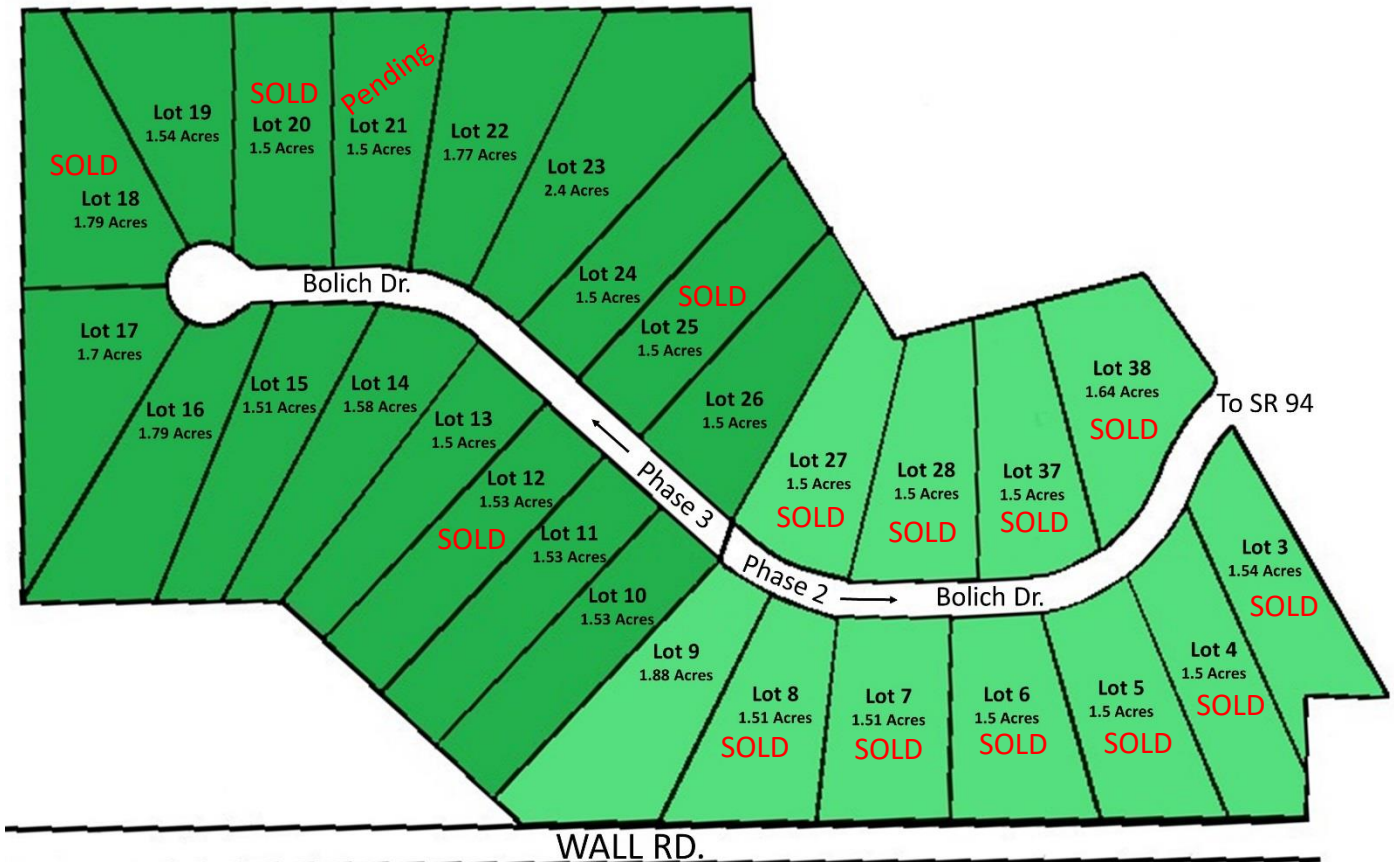


WOODHAVEN PRESERVE



Woodhaven Preserve features 28 single-family home sites boasting 1.5+ acres in a park-like setting in Wadsworth Township! These lots have wooded and rolling acreage, complete with City of Wadsworth sewer. Located at the corner of Route 94 (Mount Eaton) and Wall Roads.

Homes to be built exclusively by:



See Reverse Side For Availability



LOT #	ACREAGE	PRICE	STATUS
PHASE 2			
Lot #3	1.54	\$84,900	SOLD
Lot #4	1.50	\$89,900	SOLD
Lot #5	1.50	\$89,900	SOLD
Lot #6	1.50	\$89,900	SOLD
Lot #7	1.50	\$89,900	SOLD
Lot #8	1.50	\$89,900	SOLD
Lot #9	1.88	\$104,900	For Sale
Lot #27	1.50	\$89,900	SOLD
Lot #28	1.50	\$89,900	SOLD
Lot #37	1.50	\$89,900	SOLD
Lot #38	1.63	\$89,900	SOLD
PHASE 3			
Lot #10	1.53	\$104,900	For Sale
Lot #11	1.53	\$104,900	For Sale
Lot #12	1.53	\$94,900	SOLD
Lot #13	1.5	\$104,900	For Sale
Lot #14	1.58	\$104,900	For Sale
Lot #15	1.51	\$104,900	For Sale
Lot #16	1.79	\$114,900	For Sale
Lot #17	1.7	\$114,900	For Sale
Lot #18	1.79	\$104,900	SOLD
Lot #19	1.54	\$104,900	For Sale
Lot #20	1.5	\$94,900	SOLD
Lot #21	1.5	\$94,900	Sale Pending
Lot #22	1.77	\$104,900	For Sale
Lot #23	2.4	\$114,900	For Sale
Lot #24	1.5	\$104,900	For Sale
Lot #25	1.5	\$94,900	SOLD
Lot #26	1.5	\$104,900	For Sale

Scott Strayer, Owner / Agent
 330-472-2911
 Scott@HelenScottBuilders.com
 www.HelenScottBuilders.com